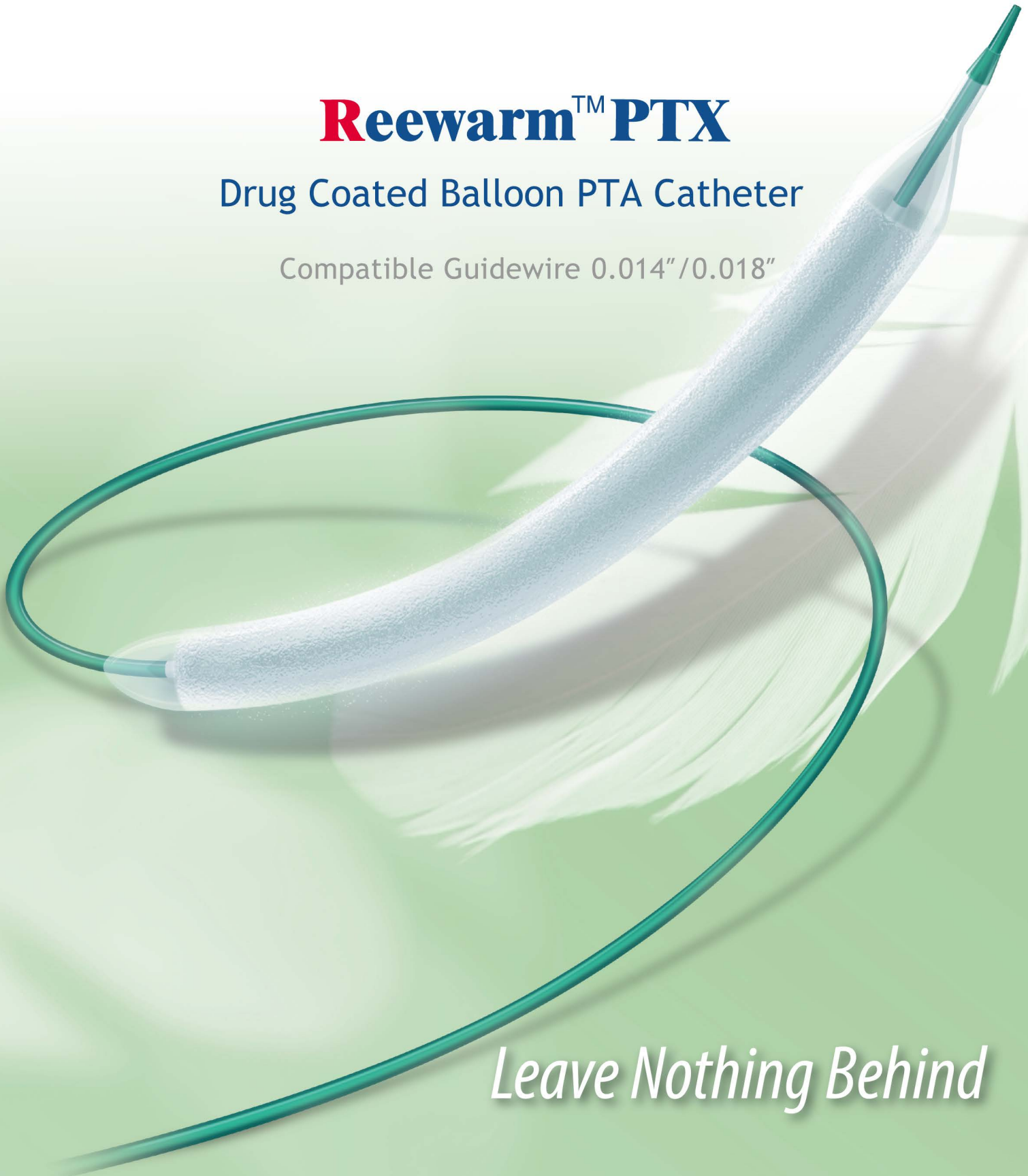




ReewarmTM PTX

Drug Coated Balloon PTA Catheter

Compatible Guidewire 0.014"/0.018"



Leave Nothing Behind

Reewarm™ PTX

Drug Coated Balloon

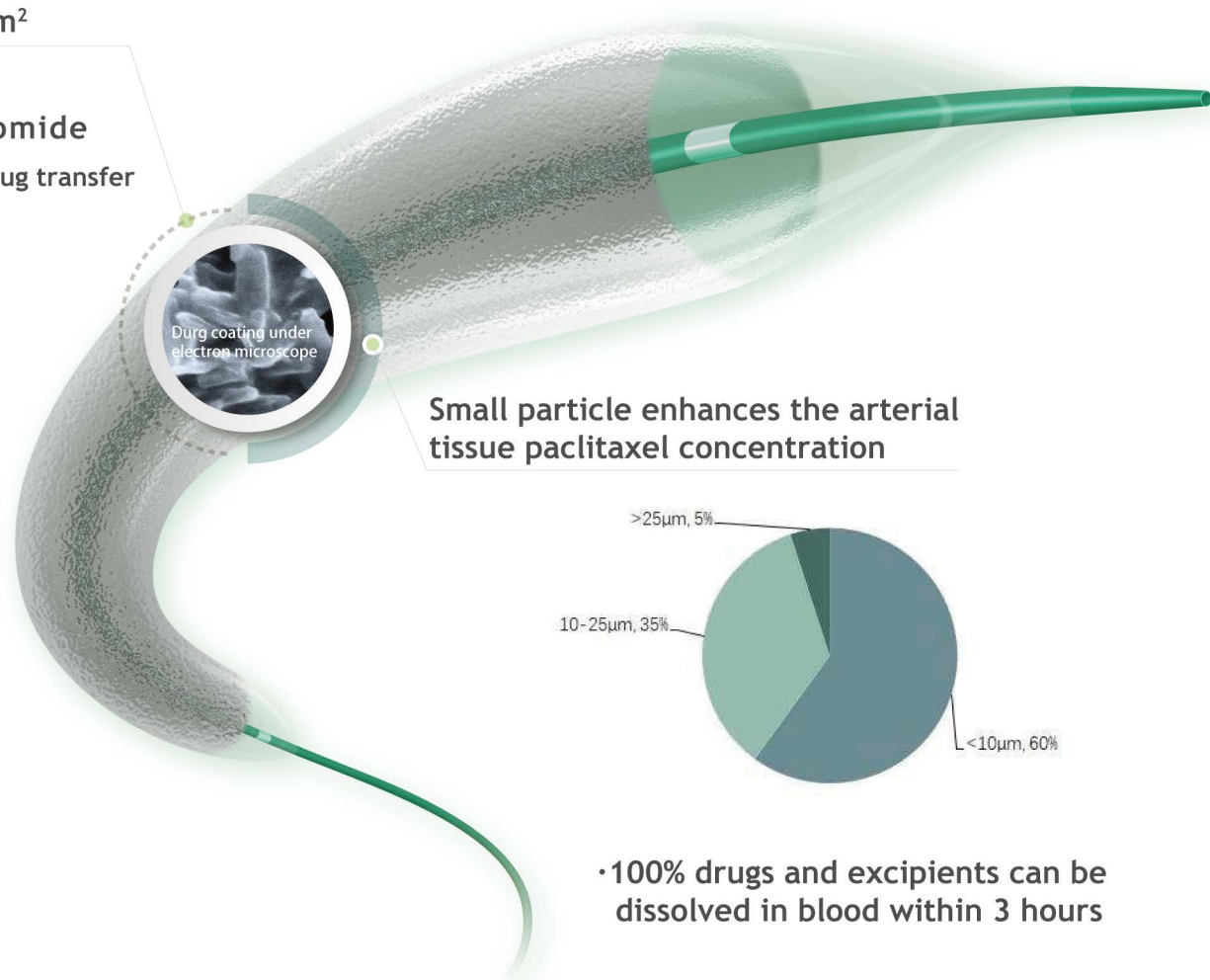
Proprietary “3-D Atomizing Spraying Technology” achieves uniform and stable drug coating

Drug dose: $3\mu\text{g}/\text{mm}^2$

Drug: Paclitaxel

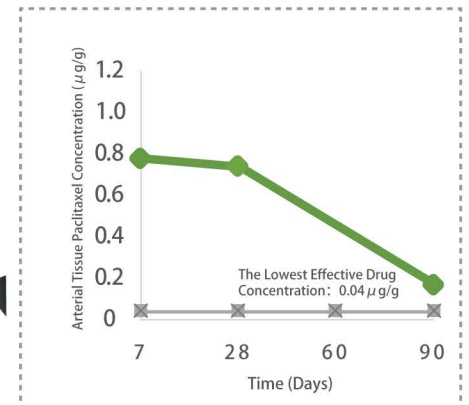
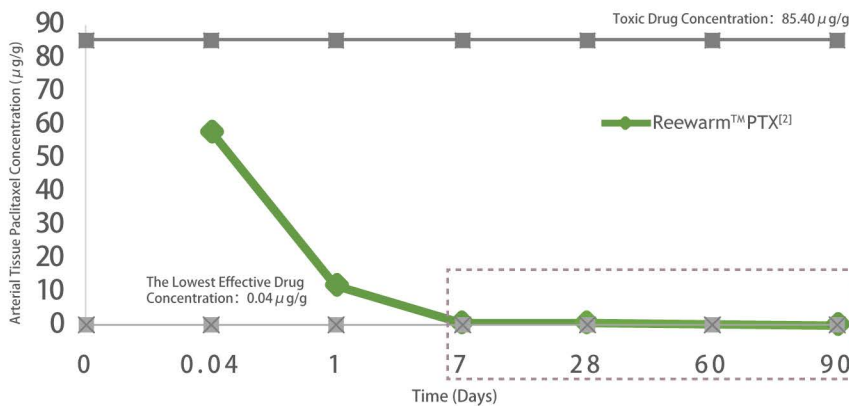
Excipient: Iopromide

Eightfold increase drug transfer comparing with pure drug coating[1]



• 100% drugs and excipients can be dissolved in blood within 3 hours

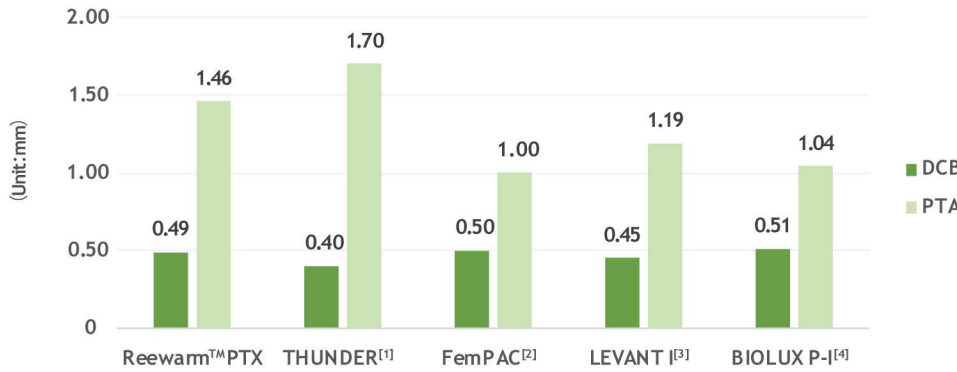
Optimal drug tissue level ensures long-term effect on restenosis



[1]European Heart Journal (2003) 24, 1462-1467

[2]Data from animal study

Primary Endpoint: Late lumen loss at 6-month (LLL)



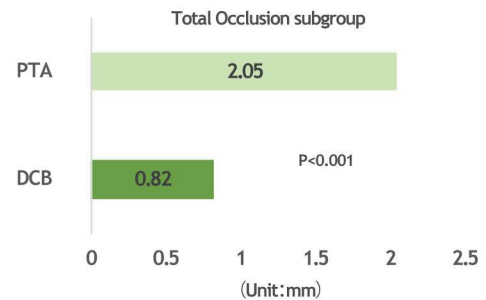
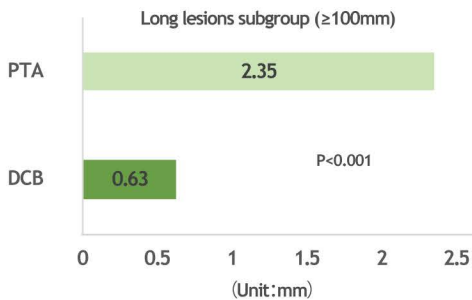
Note: LLL, defined as the difference between the minimal luminal diameter after the procedure and at 6-month follow up angiography.

- [1] N Engl J Med 2008; 358: 689-699.
- [2] Circulation 2008;118:1358-1365.
- [3] JACC Cardiovasc Interv 2014; 7: 10-19.
- [4] JEVT 2015; 22: 14-21.

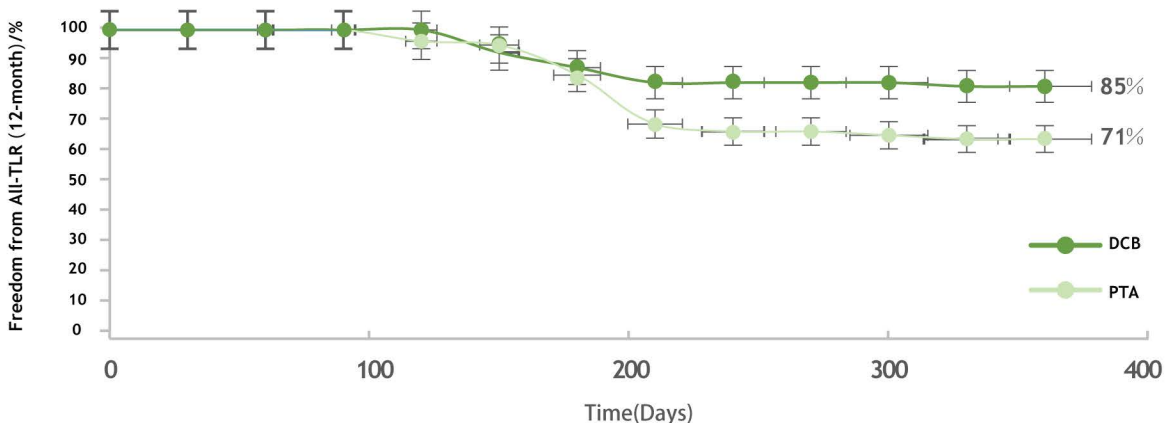
Compared with other clinical trials, Reewarm™PTX clinical trials cover more complex lesion

	Reewarm™PTX		THUNDER ^[1]		FemPAC ^[2]		LEVANT I ^[3]		BIOLUX P-I ^[4]	
	DCB	PTA	DCB	PTA	DCB	PTA	DCB	PTA	DCB	PTA
Average lesion length(mm)	96± 48	91± 44	74± 65		NA	NA	81± 37	80± 38	51± 47	69± 57
Total occlusion (%)	49	55	27		19	13	41	42	38	

Subgroup LLL at 6-month Follow-Up



Secondary Endpoint: 12 month Freedom from TLR (Target Lesion Revascularization)

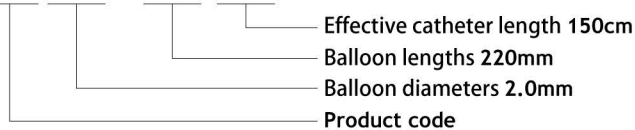


Model Specifications

Model Specifications			Balloon diameter (mm)	Balloon length (mm)	Nominal pressure (atm)	Rated burst pressure (atm)	Sheath compatibility (F)	Model Specifications			Balloon diameter (mm)	Balloon length (mm)	Nominal pressure (atm)	Rated burst pressure (atm)	Sheath compatibility (F)		
Effective catheter length 90cm	Effective catheter length 130cm	Effective catheter length 150cm						Effective catheter length 90cm	Effective catheter length 130cm	Effective catheter length 150cm							
DEB20020090	/	DEB20020150	2.0	20	6	14	5	DEB40020090	DEB40020130	DEB40020150	4.0	20	6	14	5		
DEB20040090	/	DEB20040150		40					DEB40040090	DEB40040130						DEB40040150	40
DEB20060090	/	DEB20060150		60					DEB40060090	DEB40060130						DEB40060150	60
DEB20080090	/	DEB20080150		80					DEB40080090	DEB40080130						DEB40080150	80
DEB20100090	/	DEB20100150		100					DEB40100090	DEB40100130						DEB40100150	100
DEB20120090	/	DEB20120150		120					DEB40120090	DEB40120130						DEB40120150	120
DEB20150090	/	DEB20150150		150					DEB40150090	DEB40150130						DEB40150150	150
DEB20220090	/	DEB20220150		220					DEB40220090	DEB40220130						DEB40220150	220
DEB25020090	/	DEB25020150	2.5	20	6	14	5	DEB50020090	DEB50020130	/	5.0	20	6	13	5		
DEB25040090	/	DEB25040150		40				DEB50040090	DEB50040130	/						40	
DEB25060090	/	DEB25060150		60				DEB50060090	DEB50060130	/						60	
DEB25080090	/	DEB25080150		80				DEB50080090	DEB50080130	/						80	
DEB25100090	/	DEB25100150		100				DEB50100090	DEB50100130	/						100	
DEB25120090	/	DEB25120150		120				DEB50120090	DEB50120130	/						120	
DEB25150090	/	DEB25150150		150				DEB50150090	DEB50150130	/						150	
DEB25220090	/	DEB25220150		220				DEB50220090	DEB50220130	/						220	
DEB30020090	/	DEB30020150	3.0	20	6	14	5	DEB60020090	DEB60020130	/	6.0	20	6	13	6		
DEB30040090	/	DEB30040150		40				DEB60040090	DEB60040130	/						40	
DEB30060090	/	DEB30060150		60				DEB60060090	DEB60060130	/						60	
DEB30080090	/	DEB30080150		80				DEB60080090	DEB60080130	/						80	
DEB30100090	/	DEB30100150		100				DEB60100090	DEB60100130	/						100	
DEB30120090	/	DEB30120150		120				DEB60120090	DEB60120130	/						120	
DEB30150090	/	DEB30150150		150				DEB60150090	DEB60150130	/						150	
DEB30220090	/	DEB30220150		220				DEB60220090	DEB60220130	/						220	
DEB35020090	/	DEB35020150	3.5	20	6	14	5	DEB70020090	DEB70020130	/	7.0	20	6	12	6		
DEB35040090	/	DEB35040150		40				DEB70040090	DEB70040130	/						40	
DEB35060090	/	DEB35060150		60				DEB70060090	DEB70060130	/						60	
DEB35080090	/	DEB35080150		80				DEB70080090	DEB70080130	/						80	
DEB35100090	/	DEB35100150		100				DEB70100090	DEB70100130	/						100	
DEB35120090	/	DEB35120150		120				DEB70120090	DEB70120130	/						120	
DEB35150090	/	DEB35150150		150				DEB70150090	DEB70150130	/						150	
DEB35220090	/	DEB35220150		220				DEB70220090	DEB70220130	/						220	

Model Description : DEB XX XXX XXX

Example: DEB 20 220 150



Shanghai MicroPort Endovascular MedTech (Group) Co., Ltd.
Address: Building#1, 3399 Kangxin Rd., SIMZ Century Medicine Park, Shanghai 201318, P. R. China
Tel: +86 21 38139300 Fax: +86 21 33750026 Website: www.endovastec.com



All cited trademarks are the property of their respective owners in respective countries. These devices shall only be used for curing diseases on prescription by a licensed physician. Indications, contraindications, warnings, potential adverse events and directions for use can be found in Instructions for Use and product labeling supplied with each device. These devices are prohibited to promote, distribute and sell in any countries where the registration certificates or any other licenses are not obtained. This brochure is not intended for use in aforesaid countries. This brochure is only delivered to specific people for their reference, is not to be distributed widely as an advertisement. Any information may be changed without prior notice.
Not Available for Sale in the United States.